

Power Switch Bypass Kit Install

Gauntlet (150015)

This document reviews the procedure on how to install the Gauntlet power switch bypass kit.



Please be aware of pinch points and take care to avoid injury while working inside of machines.

Tools Needed:

- 711-3502 “GAUNTLET ON/OFF SWITCH BYPASS KIT”
- Wire Strippers
- Terminal Crimper

1. **Disconnect power supply from machine** - do not attempt this procedure until the machine has been entirely disconnected from power.
2. Remove splitters and the connected wires from power switch (Fig. 1)

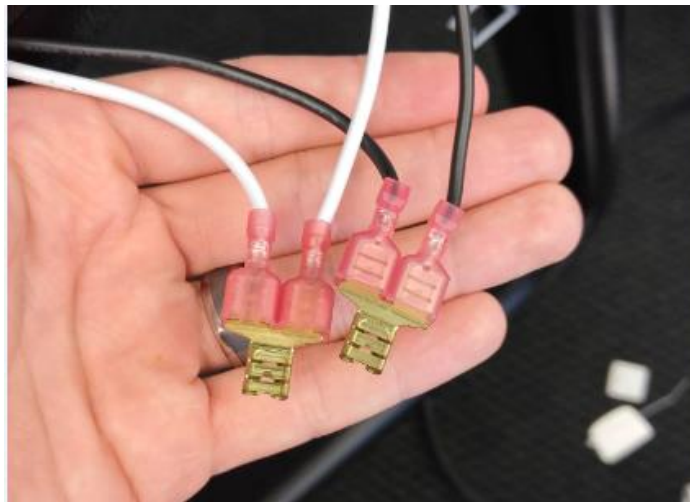


Fig. 1

3. Cut the terminal off of the black wire coming from the power inlet, then using a pair of wire strippers, strip ½” of wire shielding off of the wire and twist the wire core to form a bundled strand (Fig. 2+2.1). Repeat this process for the white wire coming from the power inlet as well.

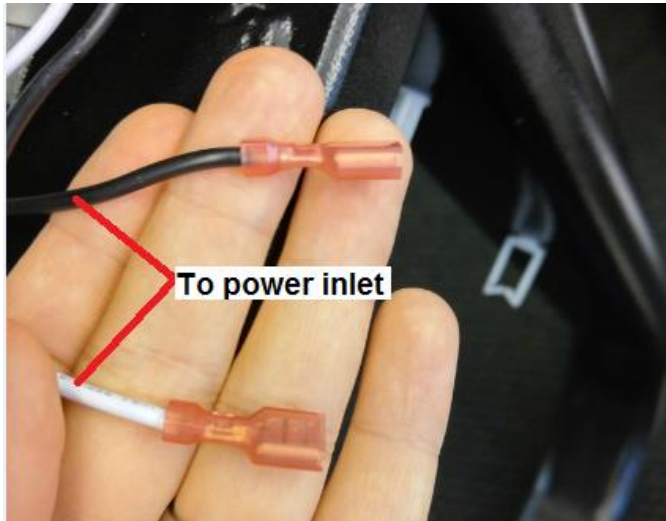


Fig. 2

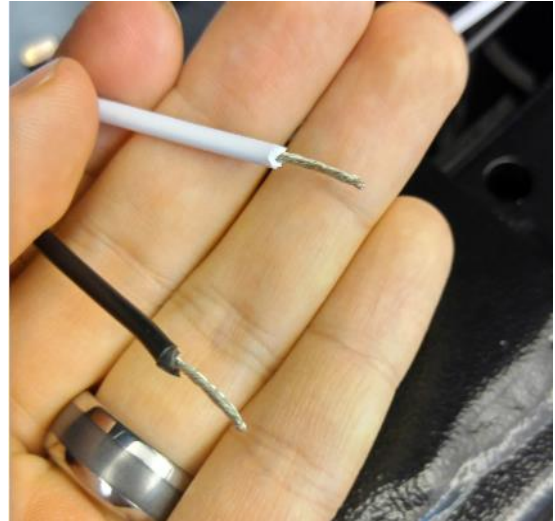


Fig. 2.1

4. Insert the exposed wire core from the black wire into a terminal from the bypass kit, taking care to ensure no bare wire is exposed, then crimp the terminal onto the wire using a pair of terminal crimpers (Fig. 3). Repeat this step for the white wire. After crimping both wires, gently pull on each wire to ensure the crimp was successful and the wires are secure (Fig. 3.1).

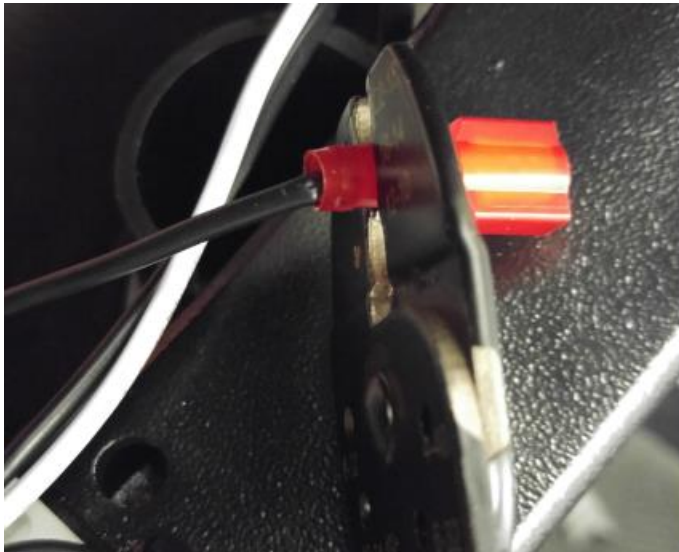


Fig. 3



Fig. 3.1

5. Install the wire splitters into the respective power inlet terminals (Fig. 4), black to black, and white to white.

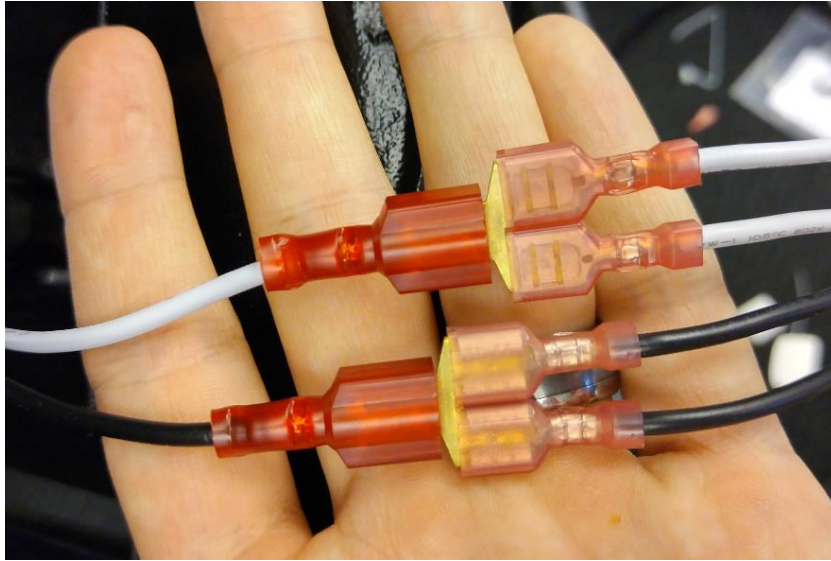


Fig. 4

6. Remove the cover from the double stick tape on the wire mount and apply the wire mount to the frame where shown below in Fig. 5.

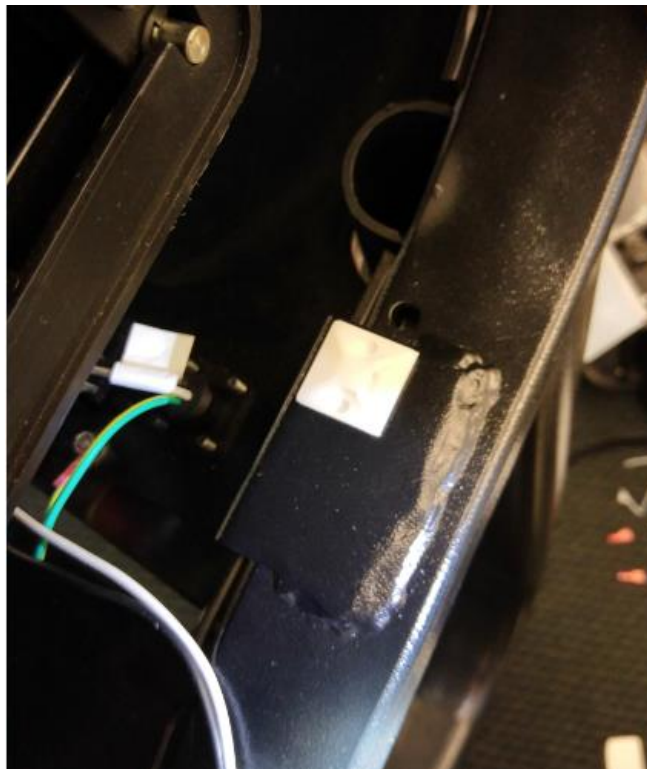


Fig. 5

7. Use the supplied ziptie to secure the wires to the wire mount (Fig. 6). Remember to clip off the ziptie tail and check to ensure all wires are properly routed away from all moving parts.

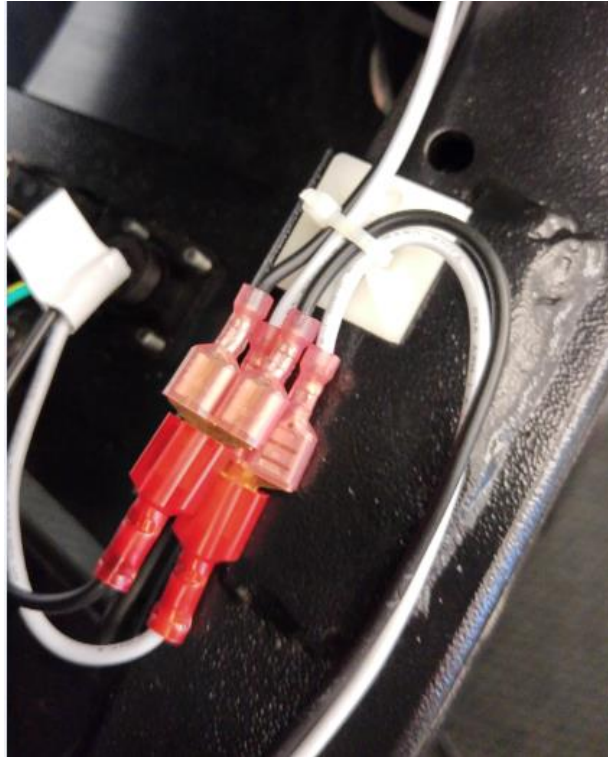


Fig. 6

8. Remove the power switch from the frame plate by pushing in on the four tabs on the outside of the switch body while pushing the switch out from the inside of the unit (Fig. 7)

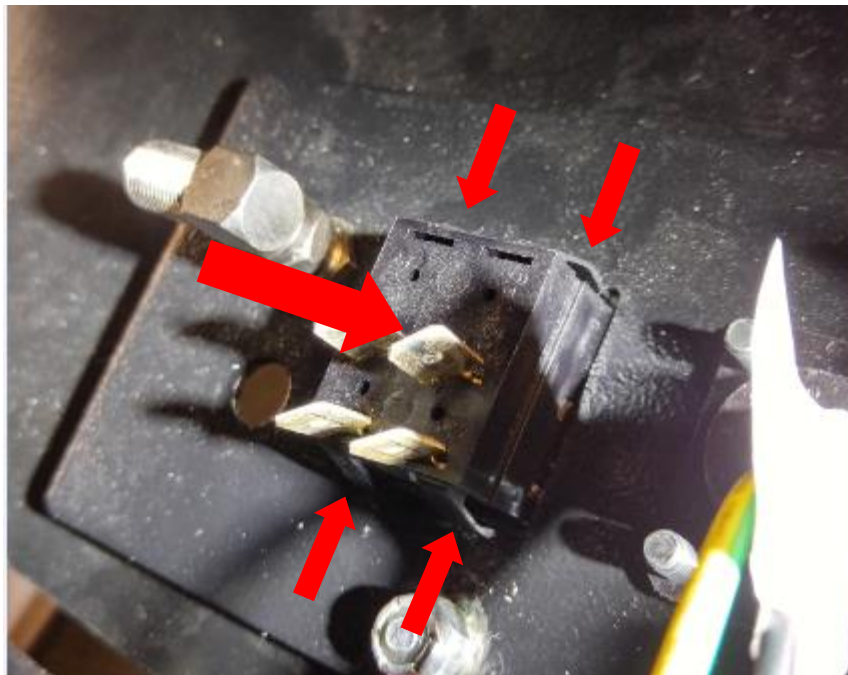


Fig. 7

9. Peel the cover off of the adhesive-backed Stairmaster decal and apply the decal over the hole in the frame plate where the power switch was removed in step 8 (Fig. 8 + 8.1). Be sure tha the decal is adhered to the frame on all four sides and that the hole is completely covered.



Fig. 8

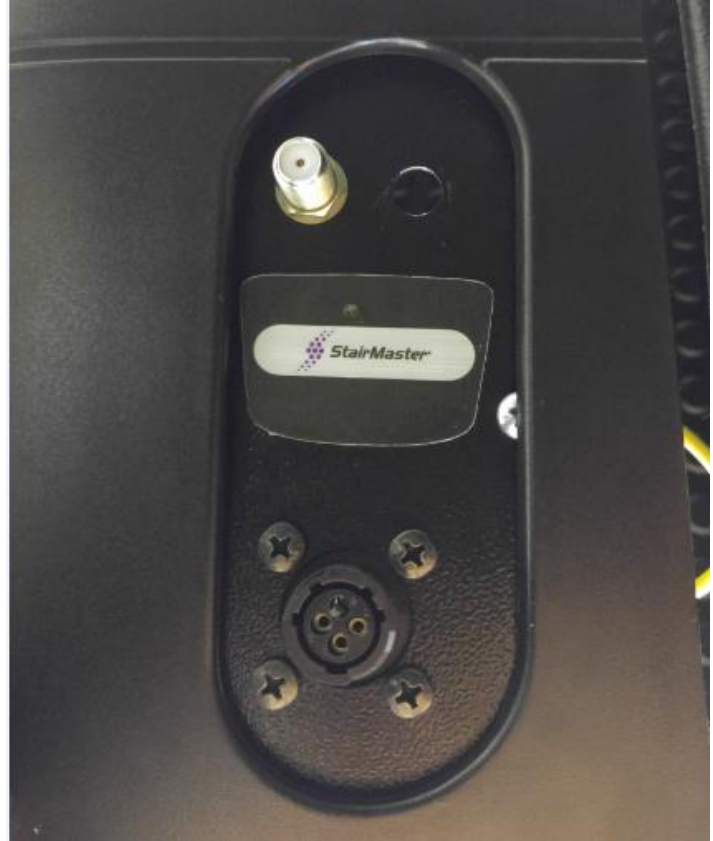


Fig. 8.1